

# SRR - RIVERSIDE SUITE

## DETAILS OF STAY

**CHECK IN : 2 PM**

**CHECK OUT : 12 PM**

**FACILITIES :** *Entire Suite with an airconditioned bedroom with attached bathroom & a living hall with a Powder Room (1 WC + 1 basin)*

*Private river access*

*Kitchen*

*Dining area - Pork free*

*BBQ facilities*

*50" Smart TV ( Youtube & Netflix available)*

*Wi-Fi ( UniFi )*

*Car Parking*

*Gated access ( remote control provided )*

*Friendly housekeeping couple stays upstairs  
(separate entry)*



ELECTRIC STEAMBOAT  
with extension wires



GAS STOVES



FRYING WOK & PAN



SAUCE / SOUP POTS



RICE COOKER

ELECTRIC OVEN



TOASTER

KETTLE



## WATER DISPENSER

Hot & Cold  
Room Temperature



## FRIDGE & FREEZER



## KNIVES



## CHOPPING BOARD



## PLATES



## BOWLS



## CUPS



## SPOONS

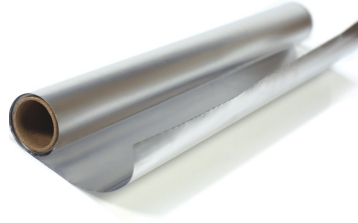
## FORKS

## CHOPSTICKS

## LADLES

# BBQ PROVISIONS

PAGE 4



BBQ PIT

CHARCOAL

LIGHTERS

FIRESTARTERS

ALUMINUM FOIL

BAMBOO SKEWERS

TONGS

# BREAKFAST PROVISIONS



ORANGES - 2 per pax  
Fresh Press Juicer

EGGS - 2 per pax  
Soft boiled egg maker

BREAD with butter & jam

COFFEE & TEA



# CONDIMENTS



COOKING OIL

SOYA SAUCE, SALT

SUGAR, BROWN SUGAR





*HOT WATER SHOWER*



*TOWEL - 6 pcs*

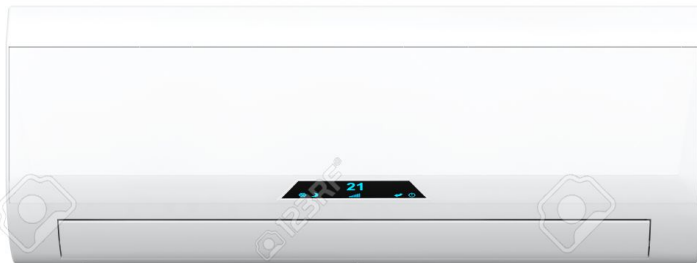


*HAIR DRYER - every room*



*BODY SOAP*

*HAIR SHAMPOO*



*AIR-CONDITIONING*

---

## OTHER PROVISIONS



*IRON & BOARD*



*MOSQUITO COILS*



*FIRST-AID KIT*



# **HOUSE RULES**

Loud noises after dark is not allowed. Guests are required to turn their volumes a notch down after dark & use the indoor hall upstairs for noise related activities. Small speakers are allowed, but loud bass is prohibited.

For the comfort of our next guests, smoking indoors is strictly prohibited.

No littering allowed, especially cigarette butts which should be placed in the trash.

Pork is not allowed.

Please clean all dishes & utensils after use.

Strictly no feeding monkeys or wild animals

Pets are not allowed.

## **FAQ**

### **1) I do not want to cook, what are my other options?**

We have contact for a local caterer (Malay cuisine) that have catered for our past guests that we can introduce to you. Do speak with us and we will try to assist.

### **2) Early check-in / Late check-out?**

Depending on availability - ie, if unit is vacant the previous day, we can allow an earlier check in at 12pm onwards.

ie, if unit is vacant the next day, we can allow a later check out at 2pm. If unit is occupied for the day before or day after, check in will strictly be at 2pm and check out at 12pm, for privacy & comfort of all guests.

### **3) I am worried about security and safety, please advise.**

We have hosted guests for a year with no untoward incidents - we keep the autogates closed once you arrive and pass you a gate remote so you can exit at anytime. The brickhouse is located in a forest / plantation accessed from a residential community that has their night patrols. In case of any emergencies, our caretakers live a few steps away within the compound. Tsun is also contactable at all times at +60163670067

### **4) Does SRR receive phone signal?**

Phone signal quality varies here, some networks are stronger (Maxis, Celcom) & some weaker (Digi, UMobile). WiFi will enable whatsapp calls. Please inform loved ones that you might receive weaker phone signals during your stay here.