

## DETAILS OF STAY

**CHECK IN : 2 PM**

**CHECK OUT : 12 PM**

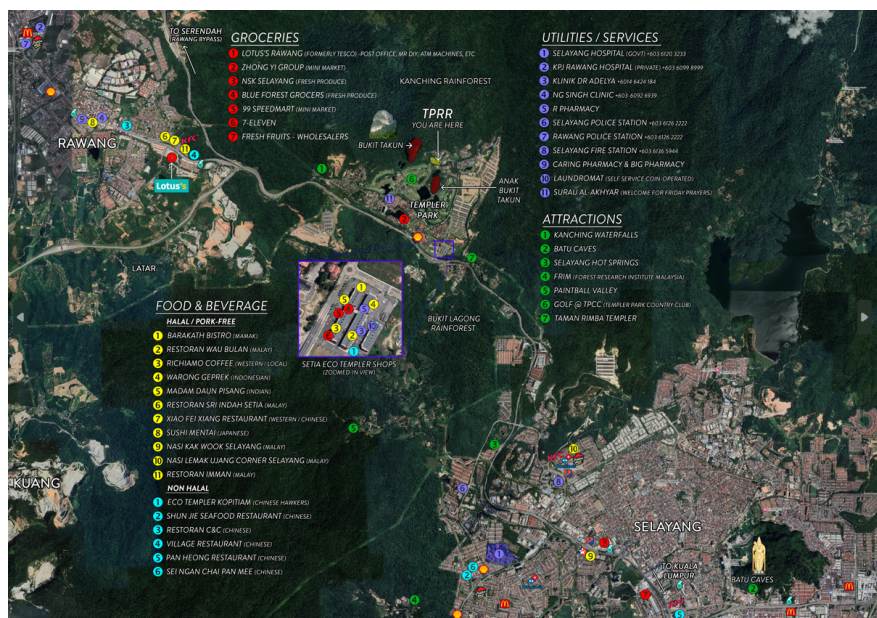
**FACILITIES (private):** Entire Container with 5 ensuite bedrooms  
Outdoor Kitchen  
Dining area - Pork free  
BBQ area  
Indoor air-con hall (Container only)  
Wi-Fi

**FACILITIES (shared):** Large Grass Field  
Swimming pool (1.2m deep)  
Jacuzzi  
Wading pool (600mm deep)  
Outdoor Barrel Sauna  
Trampoline  
Car Parking

**PHOTOS:** Click **HERE** to load Airbnb - Photo Gallery

## ATTRACTIONS, SERVICES, GROCERIES & RESTAURANTS

**LOCATION MAP:** Click to load / download link of enlarged version





ELECTRIC STEAMBOAT  
with extension wires



GAS STOVES



FRYING WOK & PAN



SAUCE / SOUP POTS



*RICE COOKER*  
*MICROWAVE OVEN*  
*ELECTRIC OVEN*



TOASTER

KETTLE



## WATER DISPENSER

Hot & Cold  
Room Temperature



## FRIDGE & FREEZER



## KNIVES



## CHOPPING BOARD



## PLATES

## BOWLS

## CUPS



## SPOONS

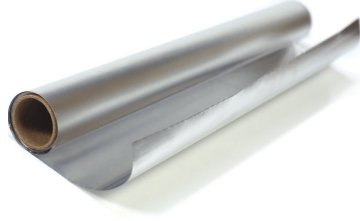
## FORKS

## CHOPSTICKS

## LADLES



# BBQ PROVISIONS



BBQ PITS

CHARCOAL

LIGHTERS

FIRESTARTERS

ALUMINUM FOIL

BAMBOO SKEWERS

TONGS

# BREAKFAST PROVISIONS



ORANGES - 2 per pax  
Fresh Press Juicer

EGGS - 2 per pax  
Soft boiled egg maker



BREAD with butter & jam

COFFEE & TEA

# CONDIMENTS *\*Please note these are only in reasonable quantity for DIY breakfast use, not for heavy cooking or deep frying*



COOKING OIL

SOYA SAUCE, SALT

SUGAR, BROWN SUGAR





HOT WATER SHOWER

TOWEL - 1 per pax



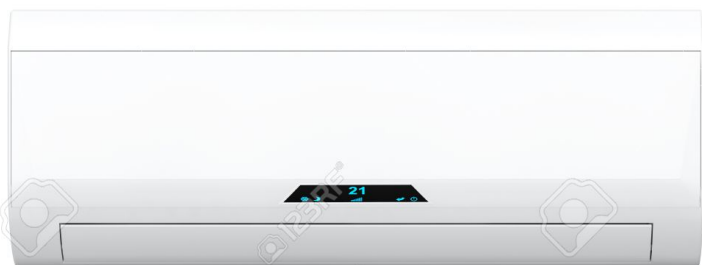
HAIR DRYER - every room



BODY SOAP

HAIR SHAMPOO

AIR-CONDITIONING



---

## OTHER PROVISIONS



IRON & BOARD



MOSQUITO COILS



FIRST-AID KIT



## FAQ

1) I do not want to cook, what are my other options?

*I have a contact for local caterers (Malay cuisine) that have catered for our past guests that I can introduce to you, or you are welcome to invite your own preferred caterer / food trucks.*

*GrabFood can also deliver here. Download the app & key in location "Templer Park Rainforest Retreat". All available food deliveries at that point in time will be shown. Please also see page 1 for a list of restaurants that are between 5 to 15 mins drive away.*

2) Does TPRR receive phone signal?

*Yes, all mobile phone have signal here, all 4G except Yes! Mobile*

3) How do I deal with Mosquitoes / Insects?

*Please note that we are in a tropical climate forested area. Mosquitoes and Insects are part & parcel of being in nature. To help, we have coils and repellent. Please keep room doors closed at all times to keep rooms mosquitoes / insects free. Bedroom windows are fitted with mosquito / insect netting.*

4) How do I deal with Monkeys?

*Please keep food items always stored & locked in the cupboards or in the fridge / freezer. For rubbish, please use the monkey proof bins. To chase the Monkeys away, use the provided Tiger & Snake doll, Bamboo poles to scare them or waterguns.*

## 5) Early check-in / Late check-out?

*Depending on availability - ie, if unit is vacant the previous day, we can allow an earlier check in at 12pm onwards. ie, if unit is vacant the next day, we can allow a later check out at 2pm.*

*If unit is occupied for the day before or day after, check in will strictly be at 2pm and check out at 12pm, for privacy & comfort of all guests.*

## 6) I am worried about security and safety, please advise.

*We have hosted guests for 8 years now with no untoward incidents, as we keep the gates closed once you arrive and pass you a gate remote so you can exit at anytime.*

*The retreat is located in Templer Heights which is a gated & guarded residential area where about 20 families reside in bungalows and work in KL or PJ.*

*Mr & Mrs Saw (owners) live at house no. 23 at the foot of the hill leading up to no. 22, beside the unit. Han is also contactable at all times at +60162038562*

*The main guardhouse is with CCTV and boom gates.*

*Guards also man the guardhouse 24 hour.*



## HOUSE RULES

*The retreat is located in a peaceful & tranquil loving community. We strive to ensure that the environment is maintained. Because the retreat is situated on an elevated land, any noise made will be amplified with echoes, hence any loud noise after dark is strictly prohibited. Guests are required to turn their volumes a notch down after dark & carry out noise generating activities indoor.*

*No loudspeakers are allowed.*

*For the comfort of our next guests, smoking indoors is strictly prohibited.*

*No littering allowed, especially cigarette butts which should be placed in the trash.*

*Pork is not allowed.*

*Please clean all dishes & utensils after use.*

*Strictly no feeding monkeys.*

*Pets are not allowed.*

---

**TERMS & CONDITIONS** - Click **HERE** to load T&C

# HALL PROVISIONS



*Whiteboard / Flipchart Holder*

*65" TV with HDMI cable for projecting materials*

*Netflix & Youtube*

*Chairs & Tables with Washroom*



CONTAINER - HALL

